

Cabinet

15 OCTOBER 2012

**CABINET MEMBER
FOR COMMUNITY
CARE**

*Councillor Marcus
Ginn*

ACTON CARE CENTRE CONTRACT EXTENSION

**All
Wards**

The current contract with Acton Care Centre provides good quality care at a reasonable price. Officers are keen to ensure continuity of provision while the current implementation of rehabilitation and continuity of care programmes is put into place. Therefore officers consider that a year's extension is appropriate to provide continuity of provision and give the Council time to consider the impact of these programmes on our intentions to reduce reliance on residential and nursing provision.

A separate report on the exempt Cabinet agenda provides exempt information regarding the financial and resource implications of the contact.

CONTRIBUTORS

Head of Complex
Needs Commissioning

Tri Borough Head of
Procurement and
Contracting

EDFCG
DoL

Recommendations:

- 1. That the contract between London Borough of Hammersmith and Fulham and Catalyst Housing Association, for the provision of Nursing Care Beds, be extended for a one year period from 1 March 2013 to 28 February 2014.**
- 2. That the Cabinet Member for Community Care, in consultation with the Tri Borough Executive Director of Adult Social Care, be authorised to negotiate any variations to the contract price that become necessary as a result of changes to the service levels that are required, but not exceeding a total of more than 10% of the contract sum subject to the necessary budget approvals.**

**HAS AN EIA BEEN
COMPLETED?**

N/A

**HAS THE REPORT
CONTENT BEEN RISK
ASSESSED?**

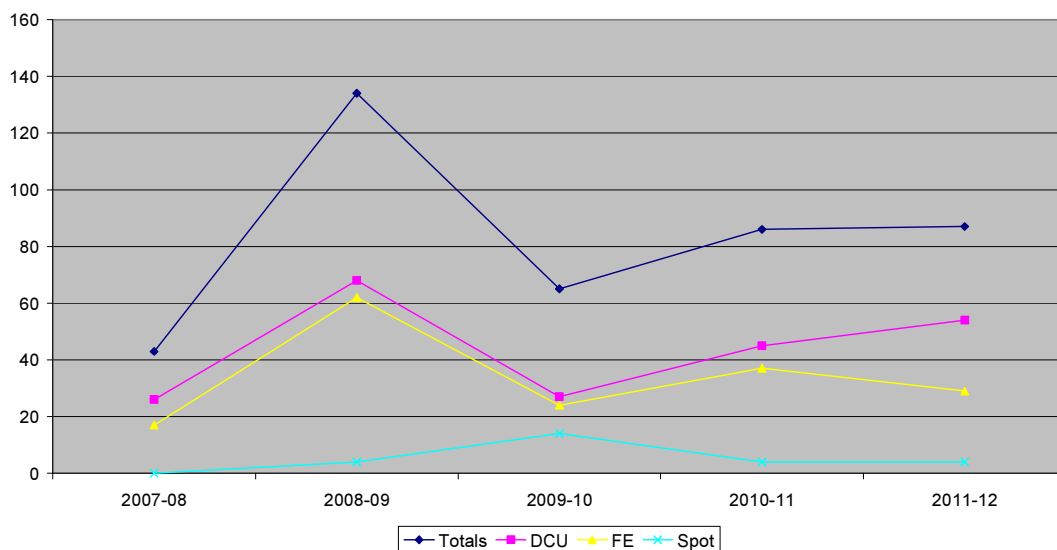
N/A

1. BACKGROUND, INCLUDING POLICY CONTEXT, AND ANALYSIS OF OPTIONS

- 1.1 The contract was awarded by the Council to Ealing Family Housing Association (subsequently renamed Catalyst Housing) originally for a 10 year period and began in 2003.
- 1.2 The home was built on the site of the former Acton Hospital and Charing Cross and the policy intention behind the project was to reduce the amount of time people spent in hospital.
- 1.3 Prior to 2008, the contract operated on contract and spot subcontract basis. However, in 2008-2009 revised Informal Block arrangements came into effect. This resulted in the formal frail elderly block & all subcontracted beds being reclassified and replaced with informal frail elderly blocks & informal dementia care blocks which are not charged unless occupied.
- 1.4 Prior to the creation of the LBHF PFIs, the PCT used a significant number of beds in Acton Care Centre. However this has significantly reduced to only eight people, given the wish to maximise Health's usage in the PFI.
- 1.5 The high number of new placements recorded in 2008-2009 in Table 1 below reflects the changes from formal to informal bed types described in para. 1.3.

Table 1

Historic Placement Activity at Acton Care Centre: 2007 - 2012
New Placements made per year



- 1.6 The total number of beds available is 125: 54 dementia care beds and 61 frail elderly care. Out of this total, the current configuration of beds for LBHF is:
- 30 Dementia Care beds (formal)
 - 10 Dementia Care beds (informal ie not paid for if not occupied)
 - 20 frail elderly beds (informal ie not paid for if not occupied)
- 1.7 The remainder of the 125 beds are sold by Catalyst to other local authorities and PCTs.
- 1.8 Officers consider that the management of Acton is strong and the workforce stable, providing a consistently high standard of care.
- 1.9 The contract is currently monitored through six monthly monitoring meetings and bi-monthly site visits. These frequencies would be increased if the need arose.

2. VOIDS

- 2.1 As set out in para. 1.6, the 20 frail elderly informal beds and 10 dementia care informal beds do not incur any void payments.
- 2.2 The 30 bed dementia care formal beds do incur void payments if vacancies occur. However this is rare, as any vacancies that occur in this block are instantly filled by the longest-standing resident in an informal dementia care bed. As a result of this policy, there have been no void payments in this Block since the informal block arrangements were introduced in 2008-09.

3. PROJECTION

- 3.1 Officers project that LBHF is likely to make 75 new placements to Acton Care Centre in 2012-13 (there have been 11 new placements made to Acton Care Centre in the 53 days between 1 April 2012 and 23 May 2012. This number of new placements has been scaled up by a factor of 6.887 ($265 \text{ days} / 53 \text{ days} = 6.887$) to generate the projected figure of 75.
- 3.2 Seasonal variations only tend to affect the weeks leading up to Christmas and New Year, where a rise in the number of Respite episodes can usually be seen. This rise in numbers is generally offset by a lack of activity immediately after this holiday period. There is sometimes a similar rush before and lack of activity after Easter.
- 3.3 Current figures indicate the following usage:
- 85% of the 20 frail elderly beds available to LBHF are in use.
 - 92.5% of the 40 dementia care beds available to LBHF are in use.

- 3.4 Although the provision is slightly under-utilised, we are not paying any voids. In effect, we have bed 'reservations' for placements which we are yet to make. These reservations do not incur any cost.
- 3.5 LBHF have only one other frail elderly block provision, a 20 bed block in St Vincents Care Home which is currently fully-occupied. It was always the Council's intention to have a home in the north of the Borough and one in the south. Acton Care Centre was chosen as the home in the north of the Borough which would complement the other two block homes.

4. EQUALITY IMPLICATIONS

- 4.1 There are no specific equality implications arising from this report.

5. PROCUREMENT CODE IMPLICATIONS

- 5.1 The recommendations of this report are in accordance with London Borough of Hammersmith and Fulham's Contract Standing Orders.
- 5.2 Para 18.2 of the Standing Orders sets out that the Cabinet may vary or extend a contract providing that to do so is in accordance with current legislative provision and consistent with the Council's Financial Regulations.

6. OUTSTANDING ISSUES

- 6.1 There are no outstanding issues arising from this report.

7. COMMENTS OF THE DIRECTOR OF FINANCE AND CORPORATE GOVERNANCE

- 7.1 These are in the separate exempt report.

8. COMMENTS OF THE DIRECTOR OF LAW

- 8.1 These are in the separate exempt report.

LOCAL GOVERNMENT ACT 2000
LIST OF BACKGROUND PAPERS

BACKGROUND PAPERS	None
CONTACT OFFICER:	NAME: Paulo Borges, Contracts Manager, 020 8753 5748 paulo.borges@lbhf.gov.uk Mary Dalton, Head of Complex Needs Commissioning 020 7641 6615 mdalton@westminster.gov.uk